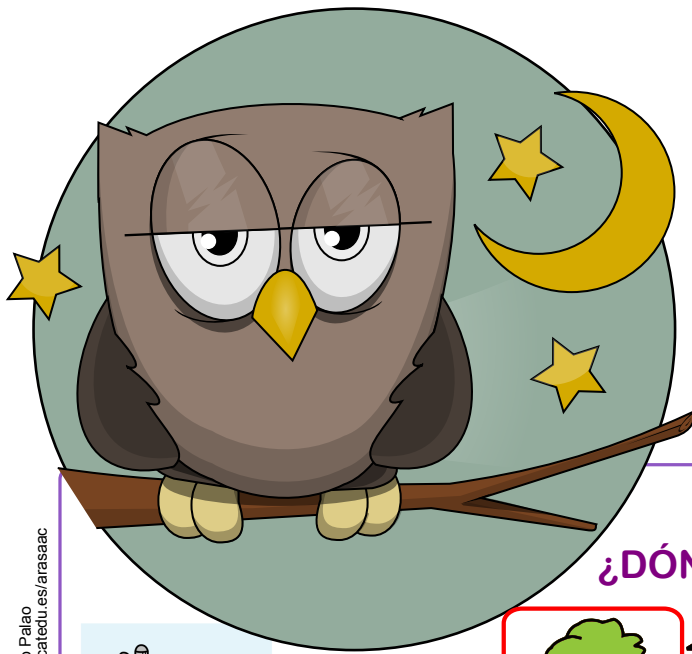
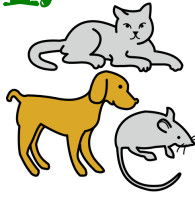


DESCRIBIMOS ANIMALES



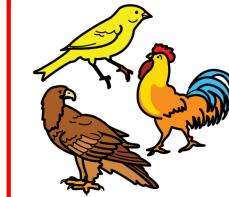
1. GRUPO AL QUE PERTENECE



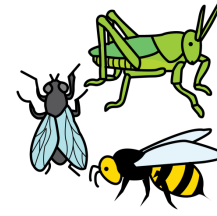
MAMÍFEROS



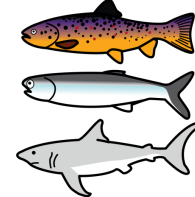
ANFÍBIOS



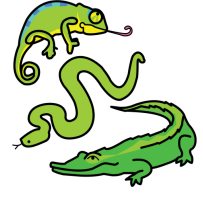
AVES



INSECTOS



PECES

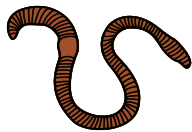


REPTILES

2. ¿DÓNDE VIVE?



GRANJA



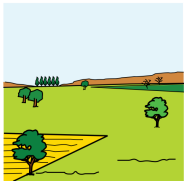
BAJO TIERRA



ÁRBOLES



DOMÉSTICOS



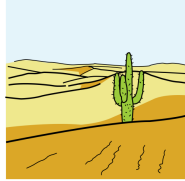
CAMPO



AGUA

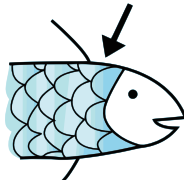


SELVA

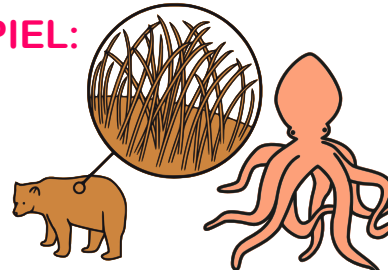


DESIERTO

3. SU PIEL:



ESCAMAS



PELO

DESNUDA



PLUMAS



CONCHAS

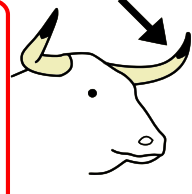


ESPINAS

4. CARÁCTERÍSTICAS: Grandes, largos, curvos, fuertes...



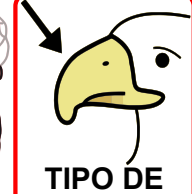
ALAS



CUERNOS



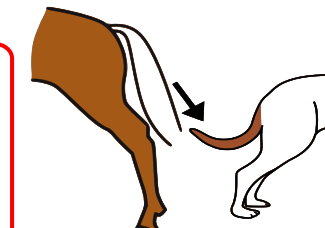
FAUCES



TIPO DE PICO



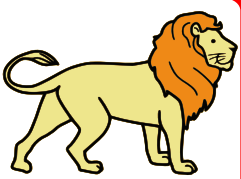
GARRAS



PATAS

RABO

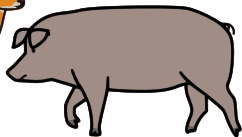
5. ALIMENTACIÓN



CARNÍVORO



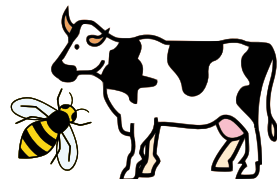
HERBÍVORO



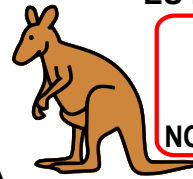
OMNIVORO

También si comen fruta, insectos, semillas,...

6. DESTACA POR...



NOS PROPORCIONA COMIDA



SALTA



ES RÁPIDO



NOCTURNO



CAMBIA DE COLOR



MAMÍFERO Y PONE HUEVOS



EXTINGUIDO



FÓSIL



FANTÁSTICO