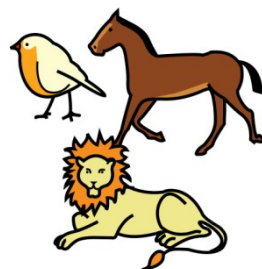


# ADIVINA ADINANZA

## Los animales de la granja



**AUTOR:** María José de Luis Flores. Maestra especialista en Audición y Lenguaje-Psicopedagoga. Autora del blog <http://lapsico-goloteca.blogspot.com.es> LICENCIA CC (BY-NC-SA)

Autor pictogramas: Sergio Palao. Procedencia, bajo licencia de Creative Commons: ARASAAC

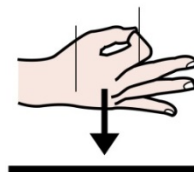




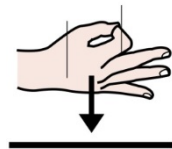
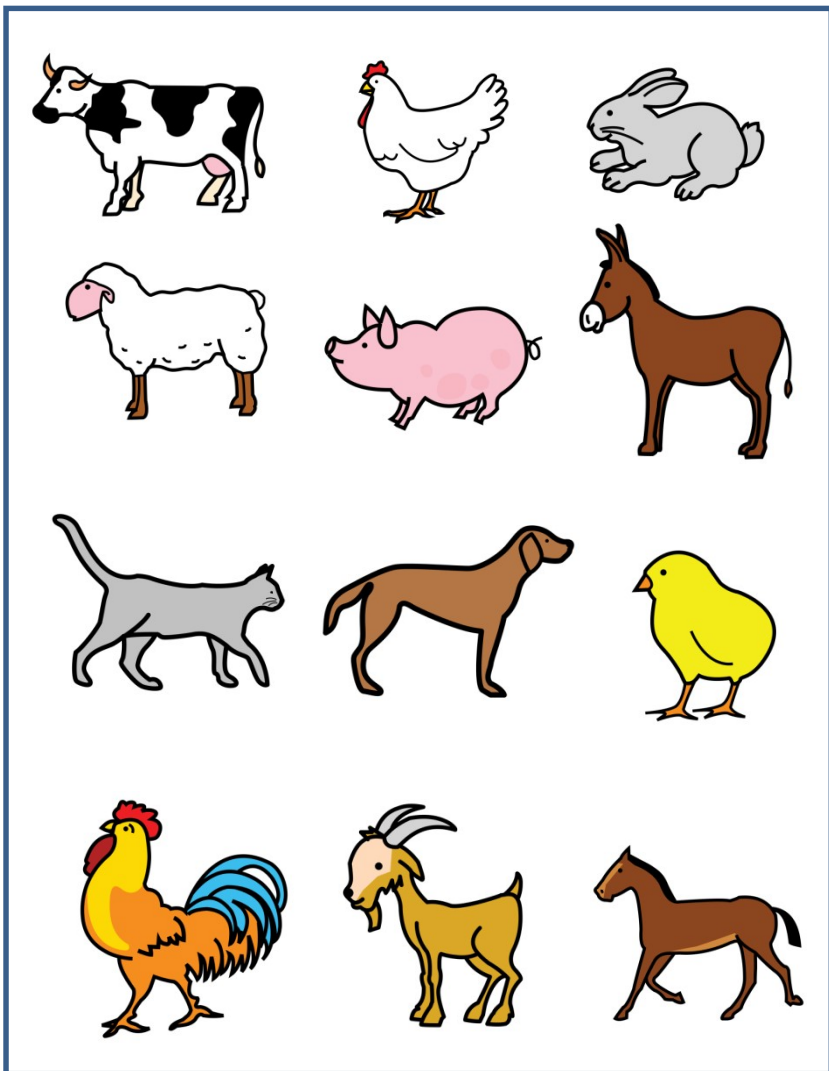
¿QUÉ



ANIMAL



SOY?



SOY



BLANCA

y



NEGRA



TENGO



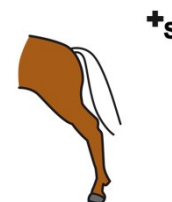
CUERNOS

y

4



CUATRO



PATAS



DOY



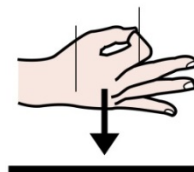
LECHE



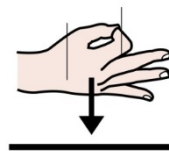
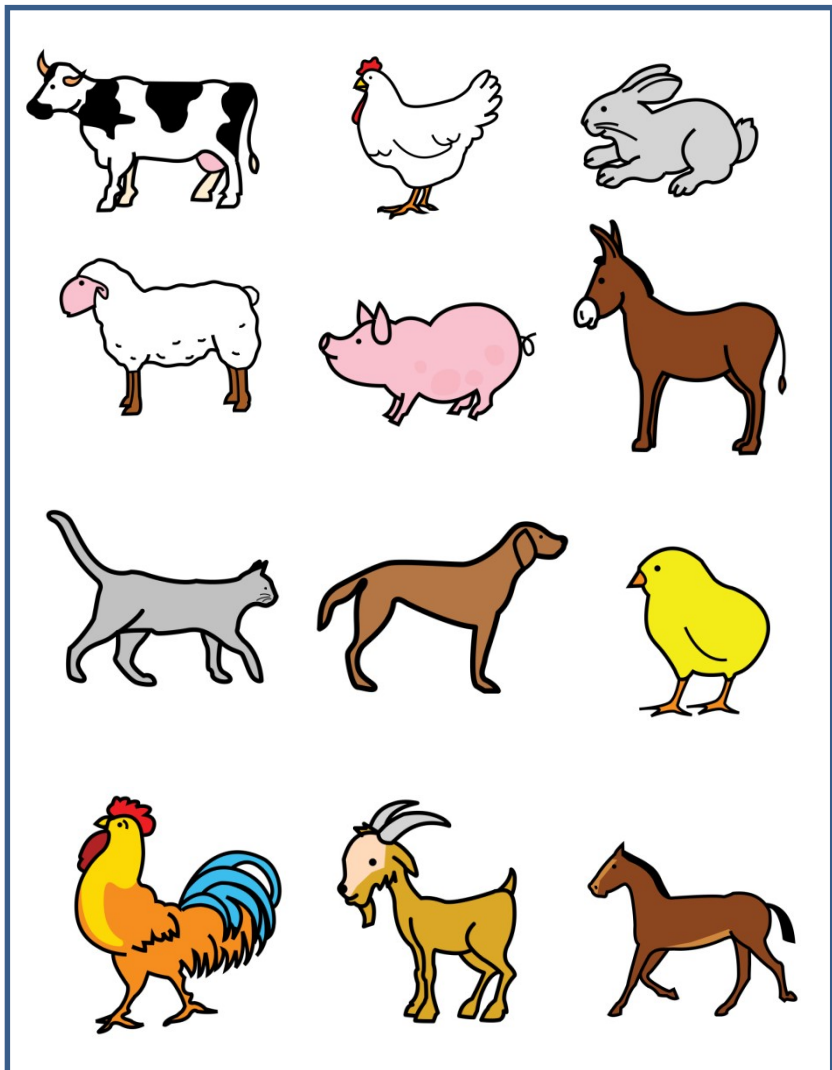
¿QUÉ



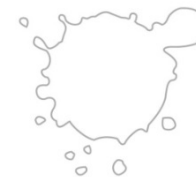
ANIMAL



SOY?



SOY



BLANCA



TENGO



PLUMAS

y

2



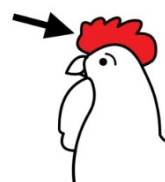
DOS



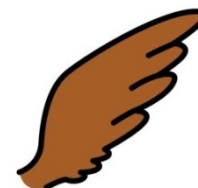
PATAS



TENGO

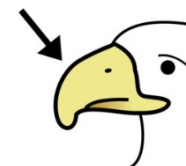


CRESTA



ALAS

y



PICO



PONGO



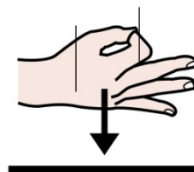
HUEVOS



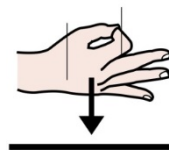
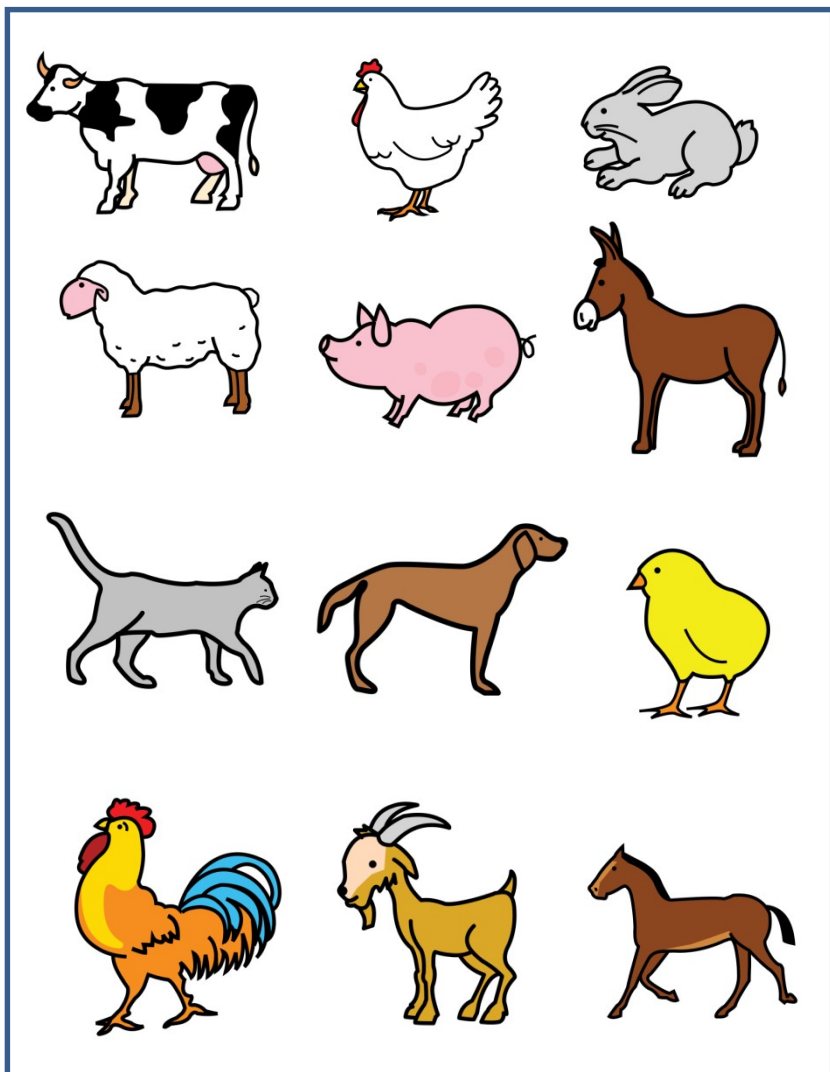
¿QUÉ



ANIMAL



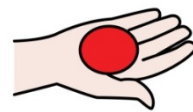
SOY?



SOY



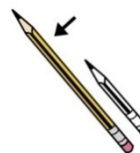
GRIS



TENGO

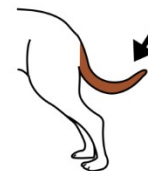


OREJAS

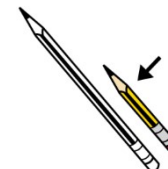


LARGAS

y



RABO

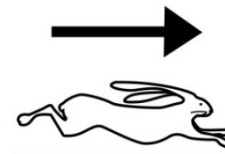


CORTO



CAMIN

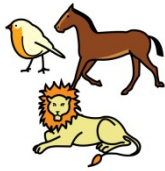
O



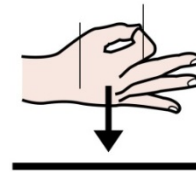
MUY RÁPIDO



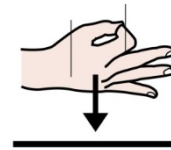
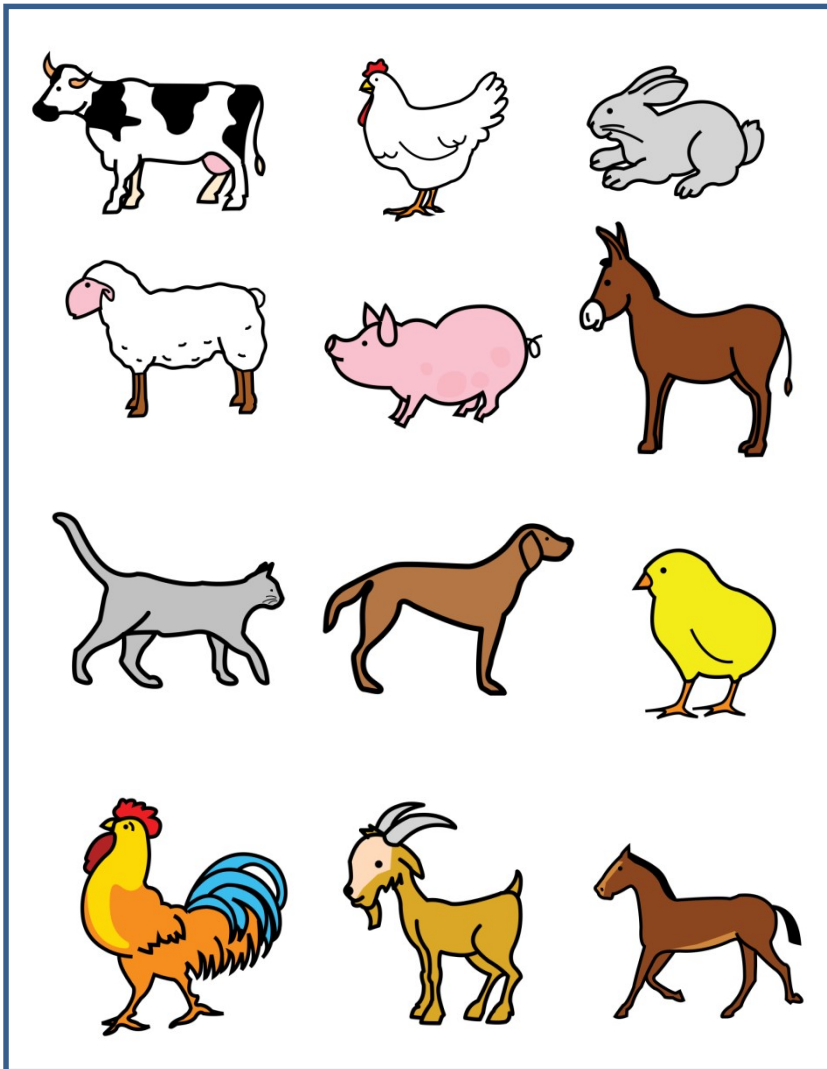
¿QUÉ



ANIMAL



SOY?



SOY

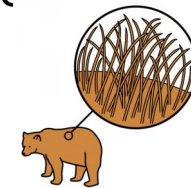


y

BLANCA



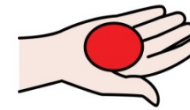
TENGO



PELO

RIZADO

+s



TENGO



CUATRO



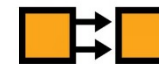
PATAS



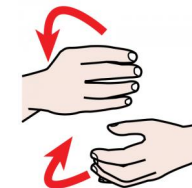
DOY



LANA



PARA



HACER



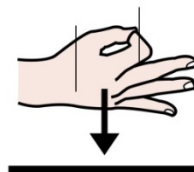
JERSEYS



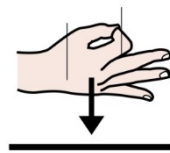
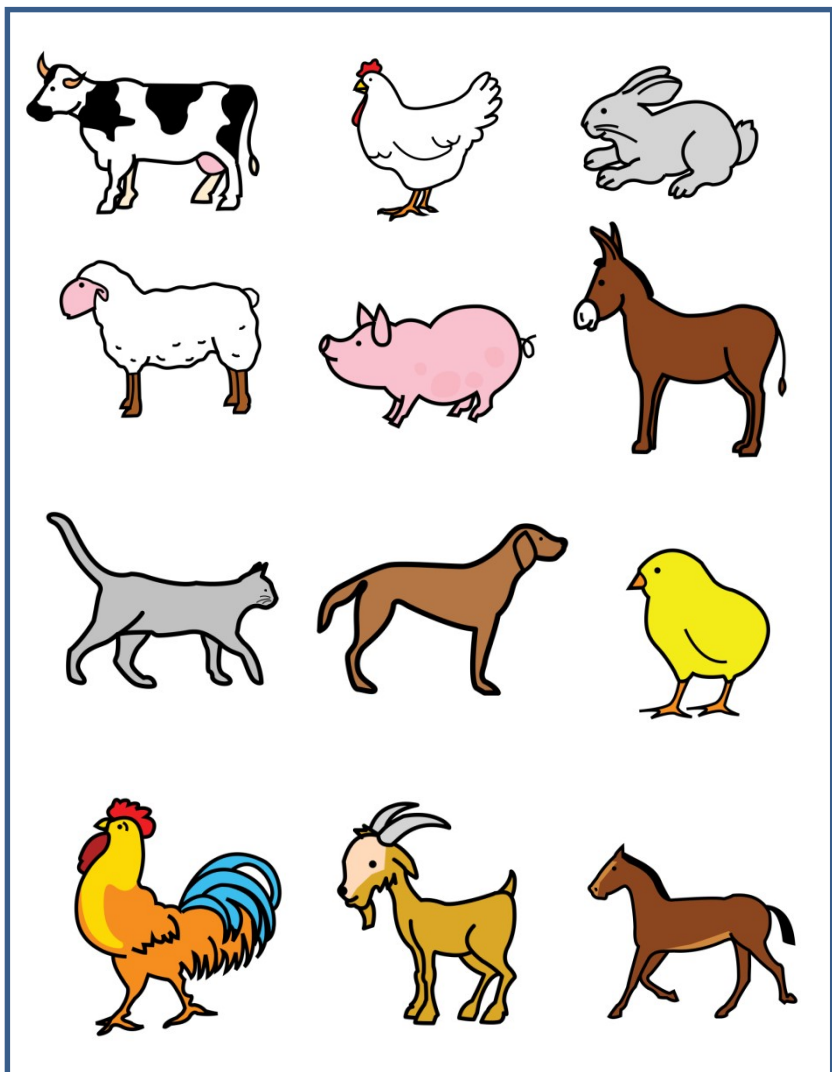
¿QUÉ



ANIMAL



SOY?



SOY



ROSA

y

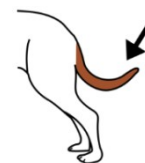


GORDO



TENGO

EL

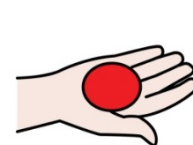


RABO



RIZADO

+s



TENGO

4



CUATRO



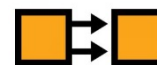
PATAS



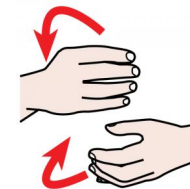
DOY



CARNE



PARA



HACER



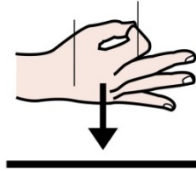
EMBUTIDOS



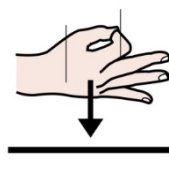
¿QUÉ



ANIMAL



SOY?



SOY

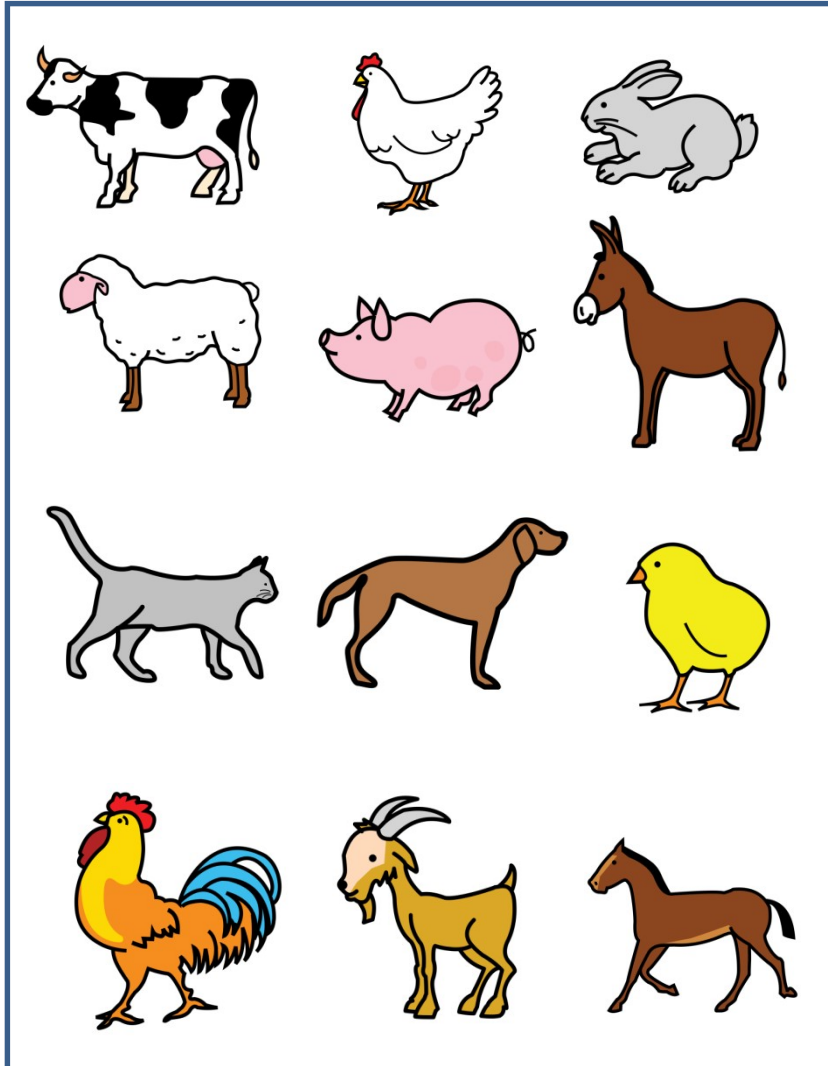


BLANCO

y



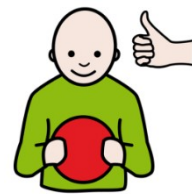
NARANJA



TENGO



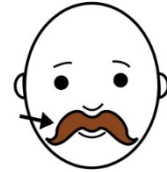
TENGO



ME  
GUSTA



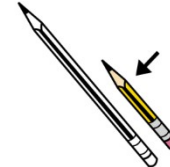
CUATRO



BIGOTES



OREJAS

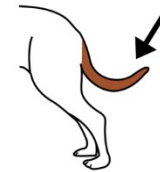


CORTAS

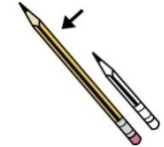


+s

PATAS



RABO



LARGO



CAZAR



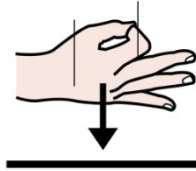
RATONES



¿QUÉ



ANIMAL



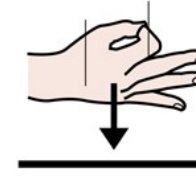
SOY?



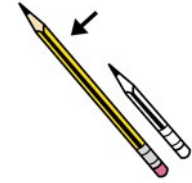
MI



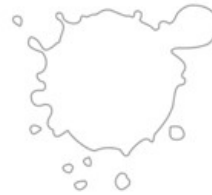
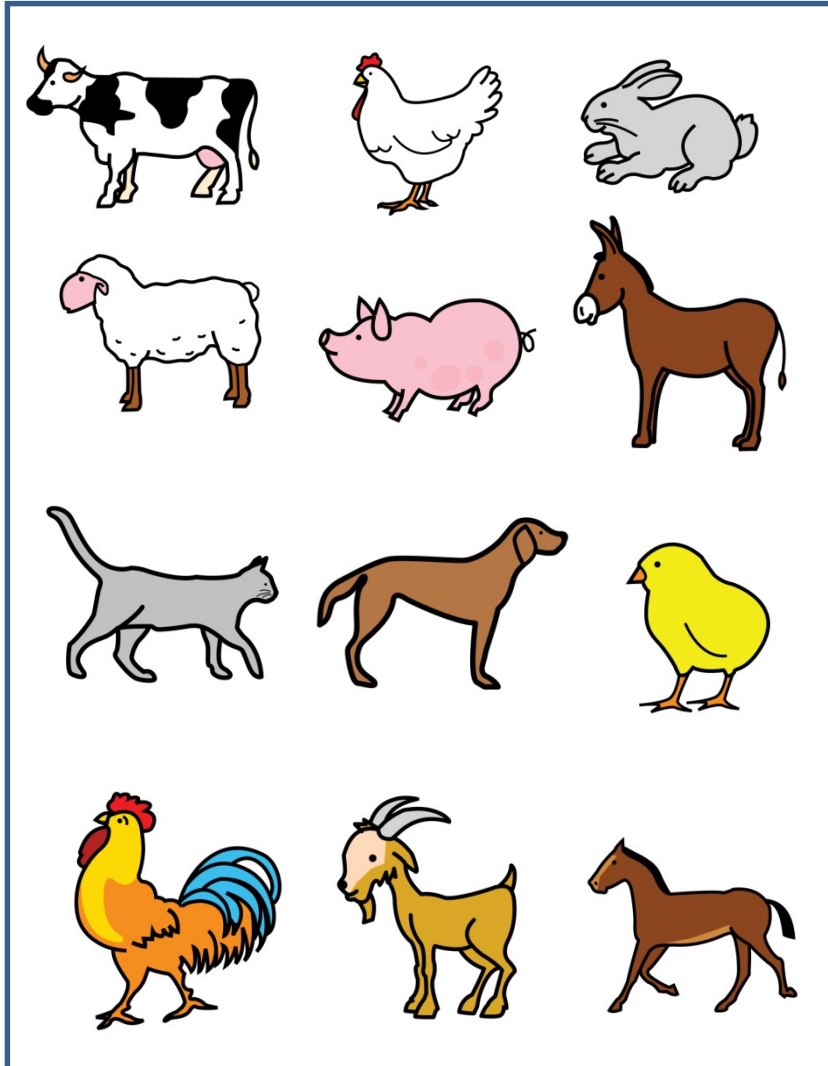
PELO



ES



LARGO

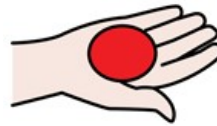


BLANCO

y



MARRÓN

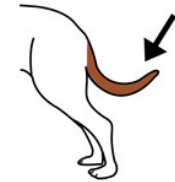


TENGO



CUATRO

y



PATAS



ME GUSTA



CHUPAR



HUESOS

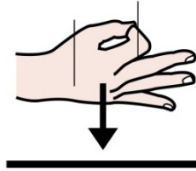




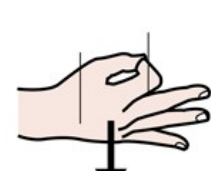
¿QUÉ



ANIMAL



SOY?

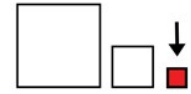


SOY

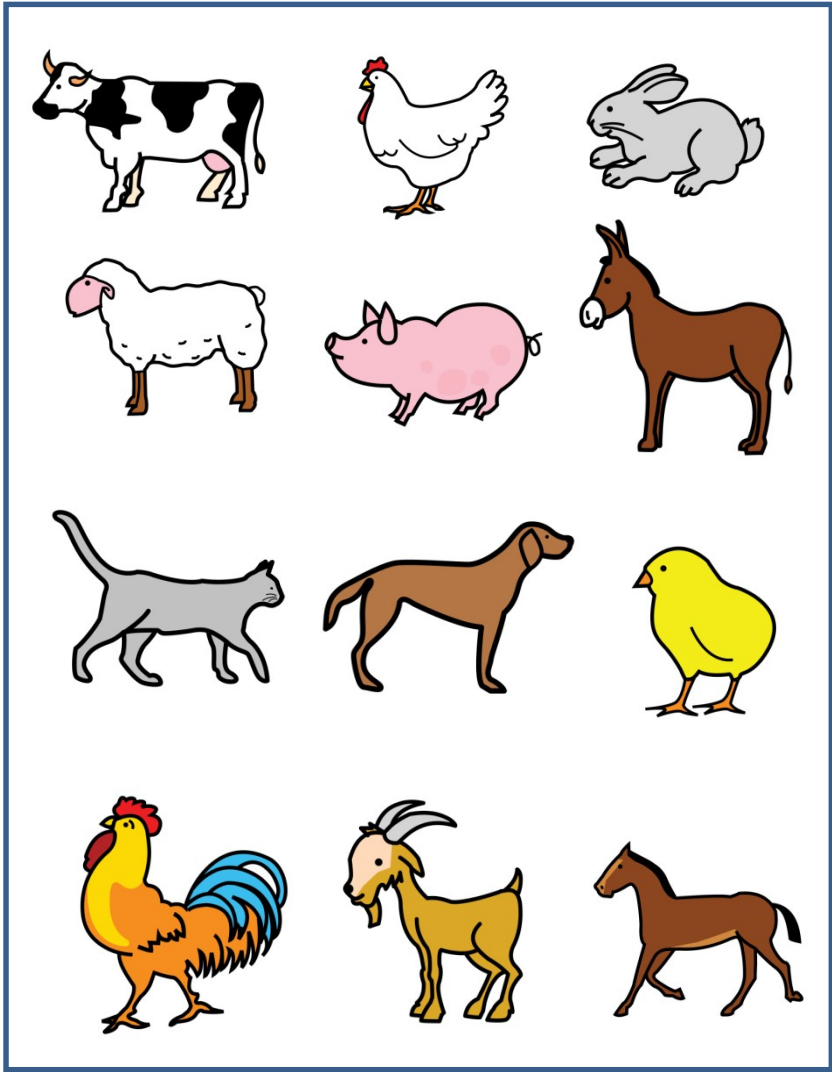


AMARILLO

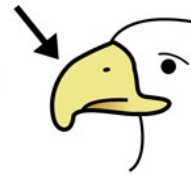
y



PEQUEÑO



TENGO



PICO

y



ALAS



PERO



NO PUEDO

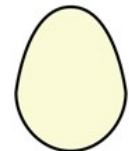


VOLAR



NACÍ

EN UN



HUEVO

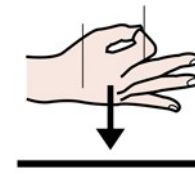
y



MI



MAMÁ



ES

LA



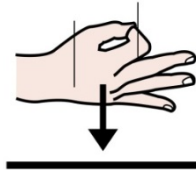
GALLINA



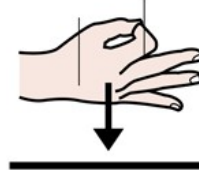
¿QUÉ



ANIMAL



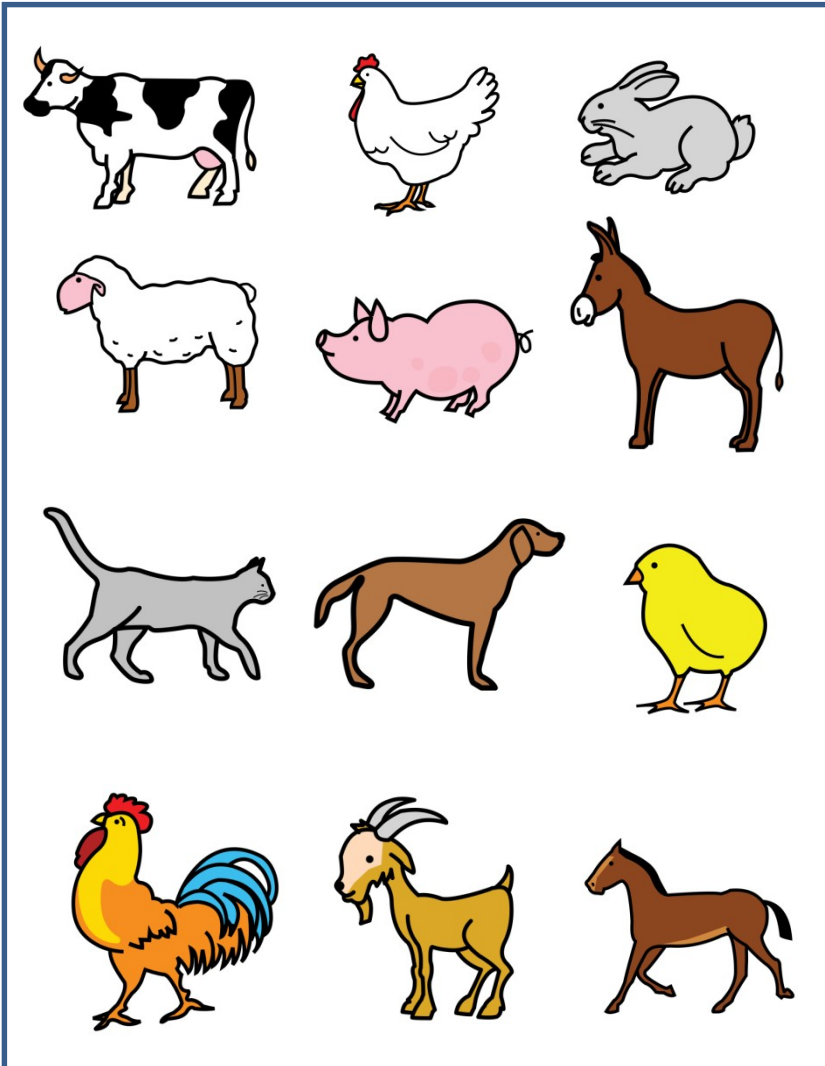
SOY?



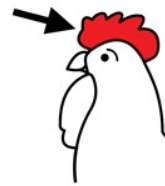
SOY



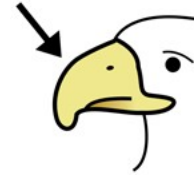
MACHO



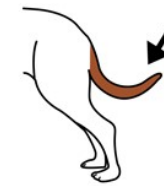
TENGO



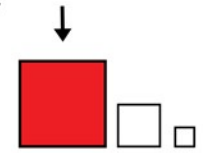
CRESTA



PICO



COLA



GRANDE

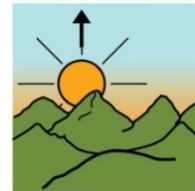
y



PLUMAS

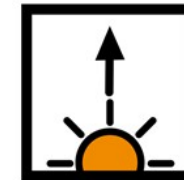


CANTO



POR LA  
MAÑANA

CUANDO

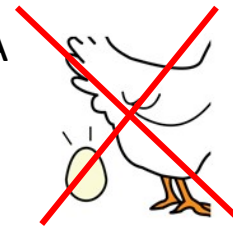


SALE

EL



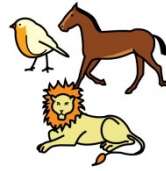
SOL



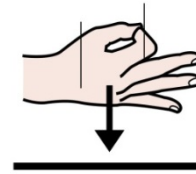
NO PONGO HUEVOS



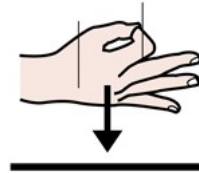
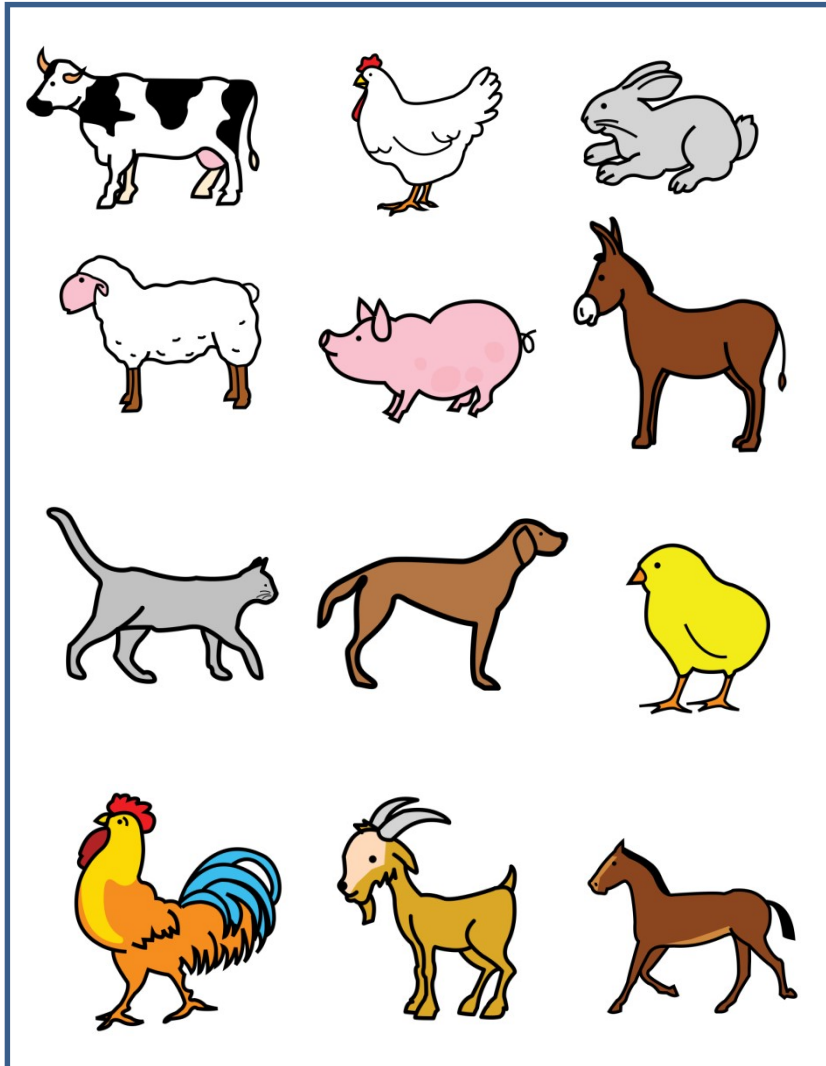
¿QUÉ



ANIMAL



SOY?



SOY



MARRÓN

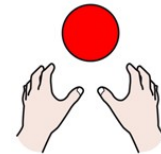
y



TENGO



CUERNOS



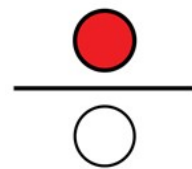
PUEDO



SALTAR



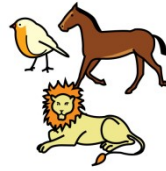
MUY



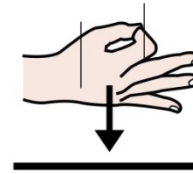
ALTO



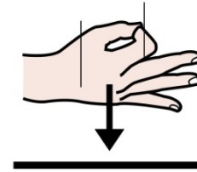
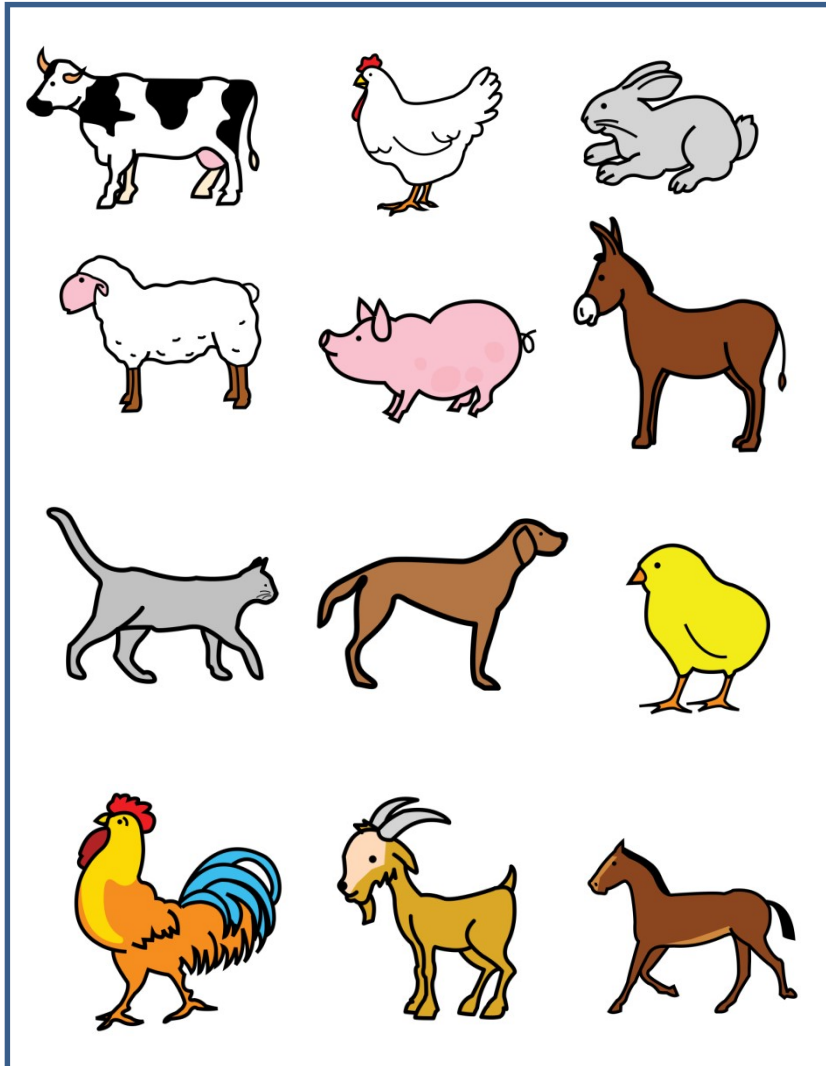
¿QUÉ



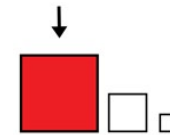
ANIMAL



SOY?



SOY

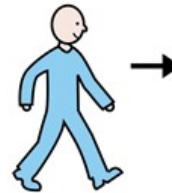


GRANDE

y



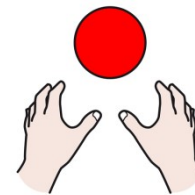
MARRÓN



VOY



AL GALOPE



PODEMOS



MONTAR

EN

ÉL