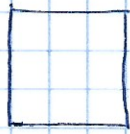


Área de cuadriláteros



4 cm

$$A = l \cdot l$$

$$A = l^2 \Rightarrow 4 \cdot 4 = 16 \text{ cm}^2$$

CUADRADO

3 cm

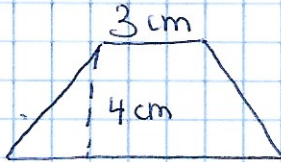


6 cm.

$$A = b \cdot a$$

$$A = 3 \cdot 6 = 18 \text{ cm}^2$$

RECTÁNGULO



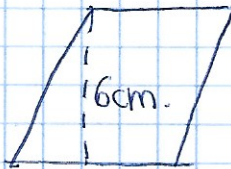
6 cm

$$A = \frac{(B+b) \cdot h}{2}$$

$$A = \frac{(6+3) \cdot 4}{2}$$

$$A = \frac{9 \cdot 4}{2} = \frac{36}{2} = 18 \text{ cm}^2$$

TRAPECIO

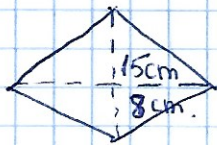


7 cm

$$A = b \cdot h$$

$$A = 7 \cdot 6 = 42 \text{ cm}^2$$

ROMBOIDE



$$A = \frac{D \cdot d}{2}$$

$$A = \frac{15 \cdot 8}{2} = \frac{120}{2} = 60 \text{ cm}^2$$

ROMBO