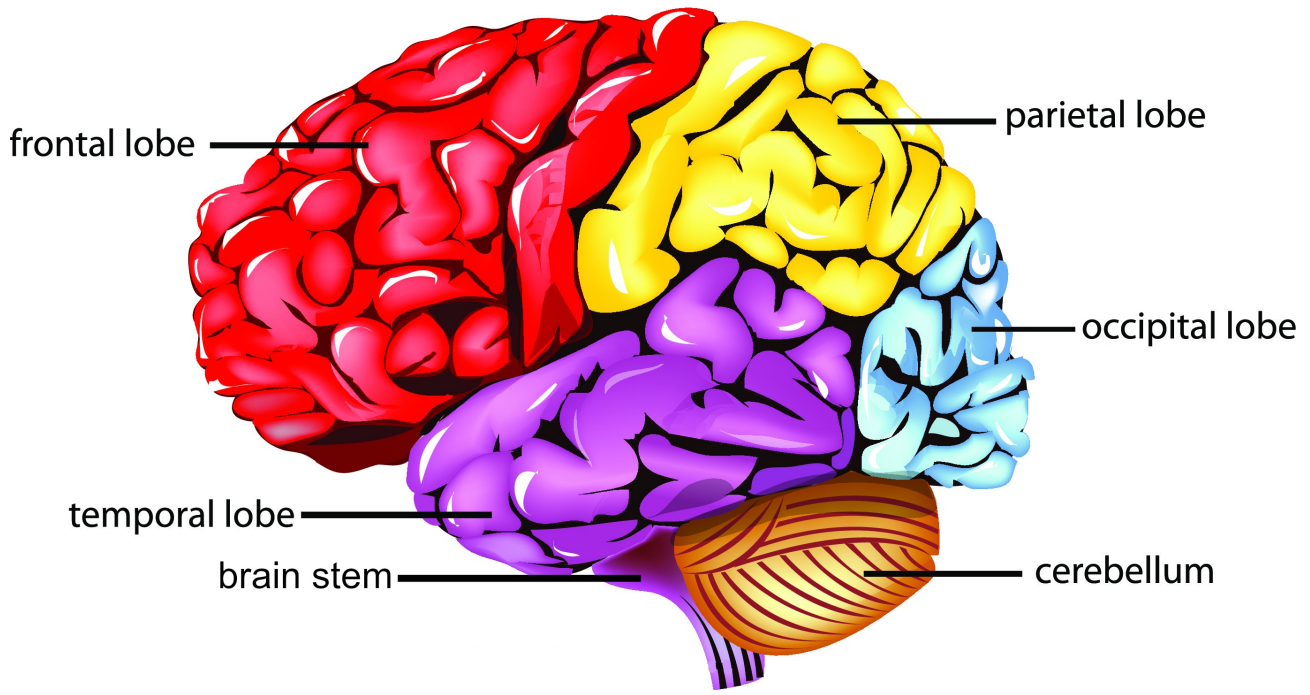


Parts of the Human Brain

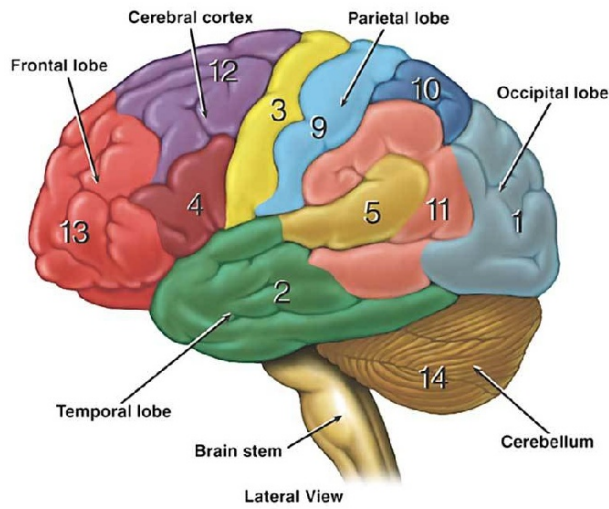


Functional Areas of the Cerebral Cortex

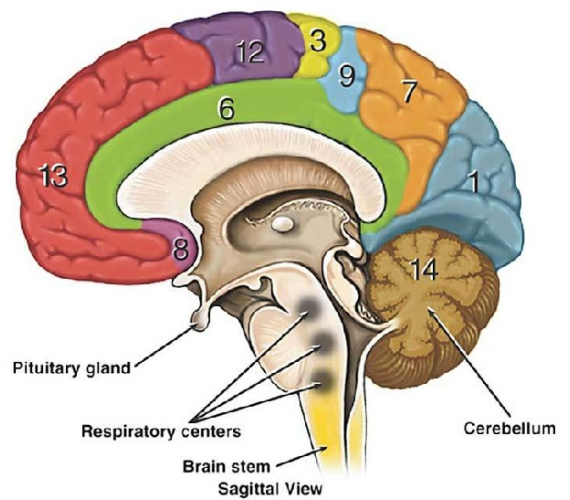
- 1 **Visual Area:**
Sight
Image recognition
Image perception
- 2 **Association Area**
Short-term memory
Equilibrium
Emotion
- 3 **Motor Function Area**
Initiation of voluntary muscles
- 4 **Broca's Area**
Muscles of speech
- 5 **Auditory Area**
Hearing
- 6 **Emotional Area**
Pain
Hunger
"Fight or flight" response
- 7 **Sensory Association Area**
- 8 **Olfactory Area**
Smelling
- 9 **Sensory Area**
Sensation from muscles and skin
- 10 **Somatosensory Association Area**
Evaluation of weight, texture, temperature, etc. for object recognition
- 11 **Wernicke's Area**
Written and spoken language comprehension
- 12 **Motor Function Area**
Eye movement and orientation
- 13 **Higher Mental Functions**
Concentration
Planning
Judgment
Emotional expression
Creativity
Inhibition

Functional Areas of the Cerebellum

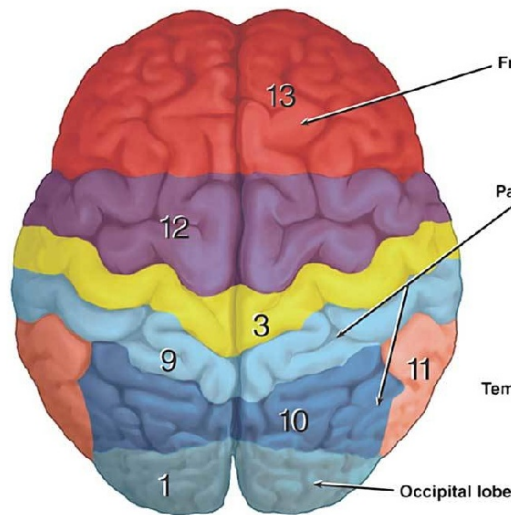
- 14 **Motor Functions**
Coordination of movement
Balance and equilibrium
Posture



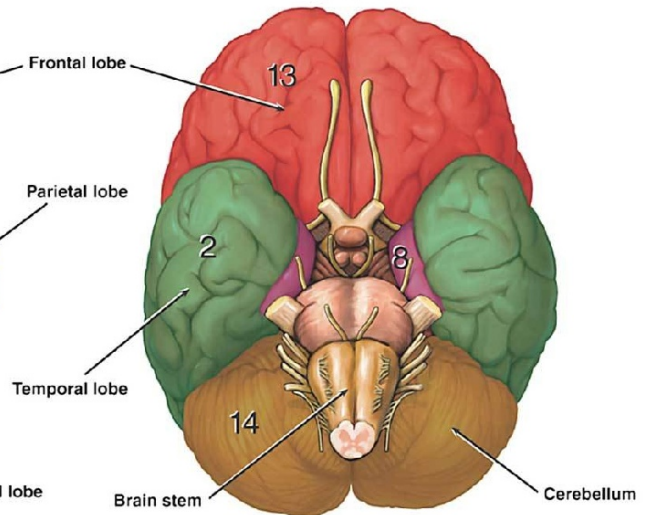
Lateral View



Sagittal View



Superior View



Inferior View