

# 4

## Sensitivity: the nervous system

We capture information from our environment and respond to it through the **sensitivity**.



**Sense organs** have **receptors**. They capture information from the environment.

**Nerves** carry information from the sense organs to the **brain**.



The brain receives and interprets this information and decides what to do.

The brain send orders to the **muscles** through the nerves.



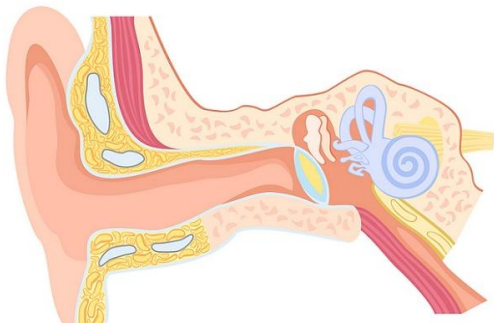


The **locomotor system** is made of **muscular system** and **skeletal system**.

Muscles receive orders from the brain and work with bones to make the body move.

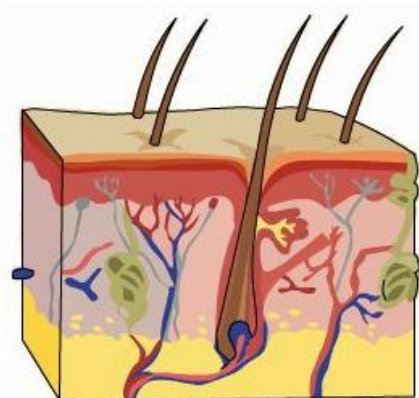
## Sense organs

### Hearing



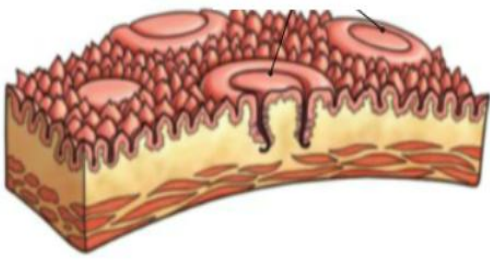
The **ears** detect sounds and send information to the brain through the **auditory nerve**.

### Touch



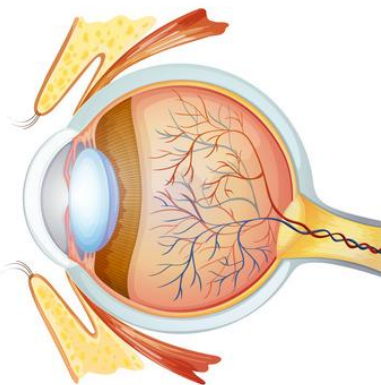
**Skin** detects different sensations. The information travels to the brain through the nerves.

## Taste



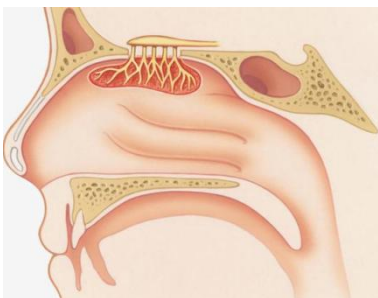
The **tongue** detects different flavours. The information travels to the brain through several nerves.

## Sight



The **eyes** detect light so can see shapes, colours... The information travels through the **optic nerve** to the brain.

## Smell



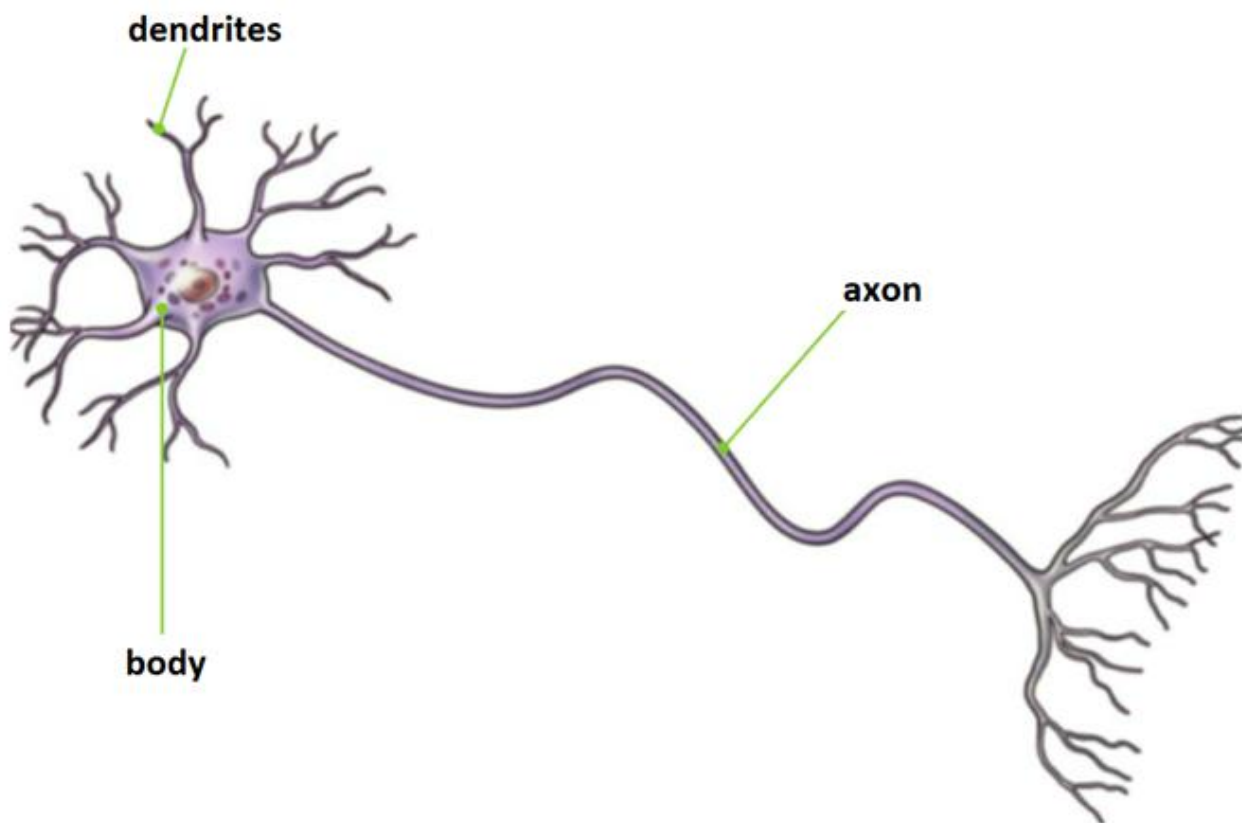
The **nose** detects different smells in the air. The information travels to the brain through the **olfactory nerve**.

# The nervous system

The **nervous system** consists of only type of tissue called the **nervous tissue**. It is made of cells called **neurons**.

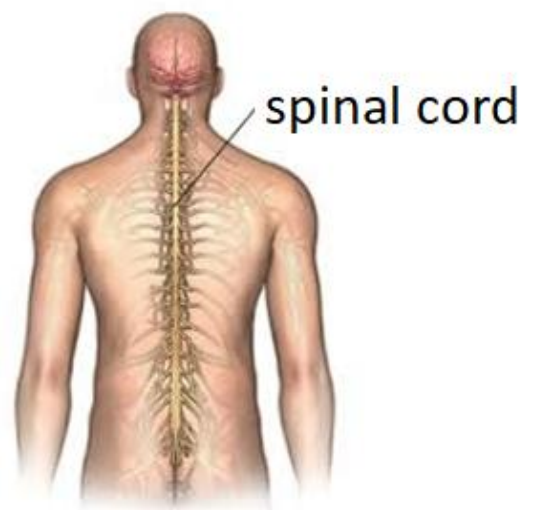
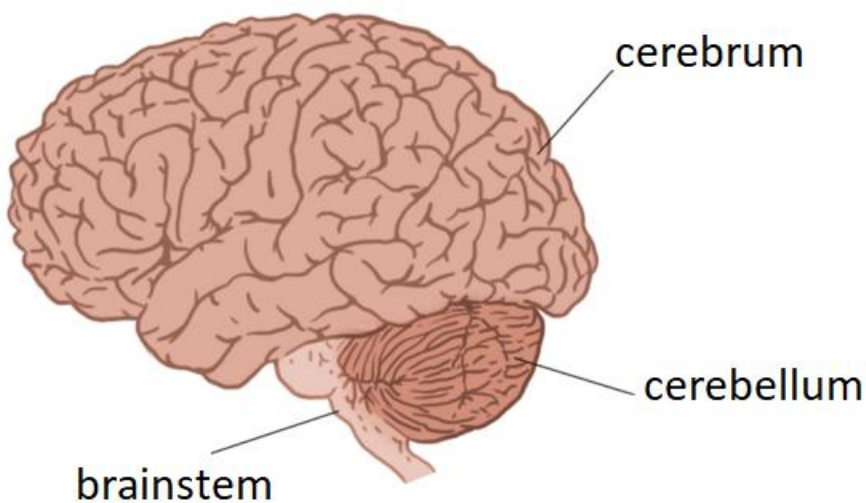
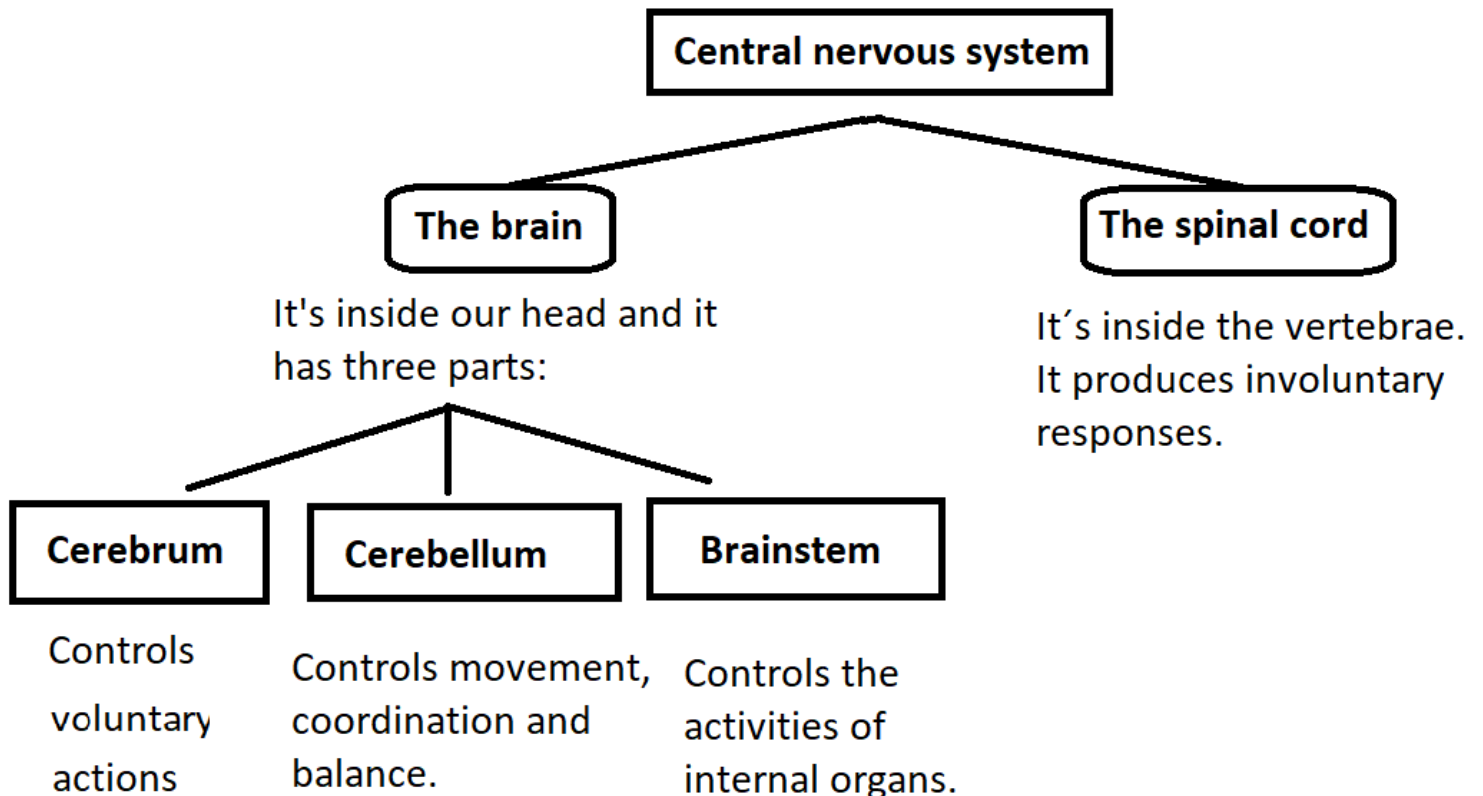
## Neurons

A **neuron** is a cell tha has got **three parts**:



# Parts of the nervous system

The nervous system is made of two parts: **the central nervous system** and **peripheral nervous system**.



## **Peripheral nervous system**

It consists of nerves, that are long fibres made of several neurons.

### **Sensory nerves**

They receive messages from the organs and send them to the brain and the spinal cord.

### **Motor nerves**

They send orders from the brain and the spinal cord to the other organs.