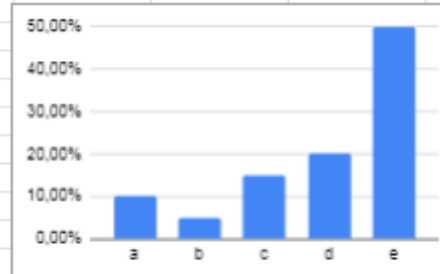
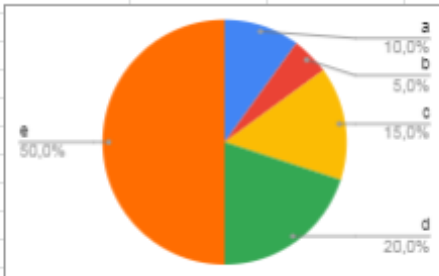


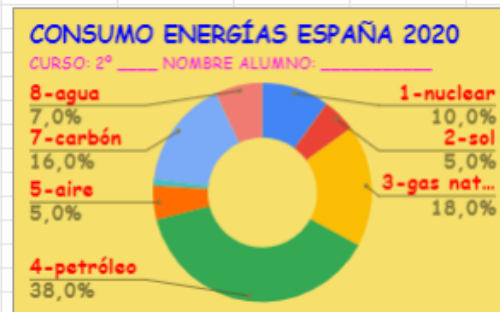


15 fx

	A	B	C	D	E	F	G	H	I
	a	10,00%			a	10,00%			
	b	5,00%			b	5,00%			
	c	15,00%			c	15,00%			
	d	20,00%			d	20,00%			
	e	50,00%			e	50,00%			

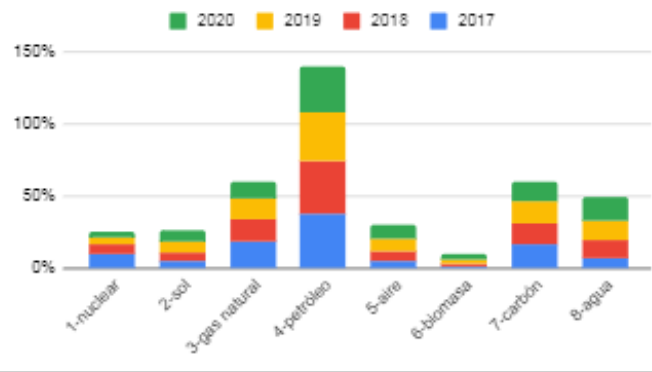


	2017	2018	2019	2020
1-nuclear	10%	6%	5%	4%
2-sol	6%	6%	7%	8%
3-gas natural	18%	16%	14%	12%
4-petróleo	38%	36%	34%	32%
5-aire	5%	7%	8%	10%
6-biomasa	1%	2%	3%	4%
7-carbón	16%	15%	15%	14%
8-agua	7%	12%	14%	16%
	100%	100%	100%	100%

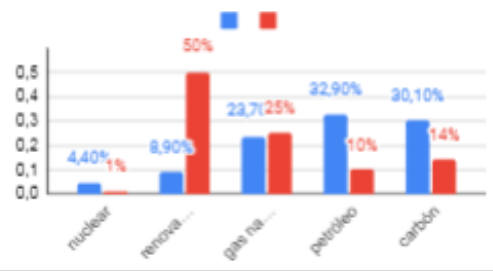


	2017	2018	2019	2020
1-nuclear	10,0%	6,0%	5,0%	4,0%
2-renovables	8,90%	8,90%	8,90%	50,0%
3-gas natural	23,70%	23,70%	23,70%	25,0%
4-petróleo	32,90%	32,90%	32,90%	10,0%
5-carbón	30,10%	30,10%	30,10%	14,0%
TOTAL	100,00%	100,00%	100,00%	100,00%

2017, 2018, 2019 y 2020

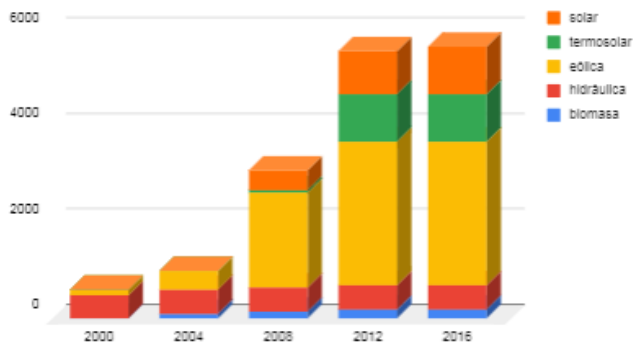


evolución

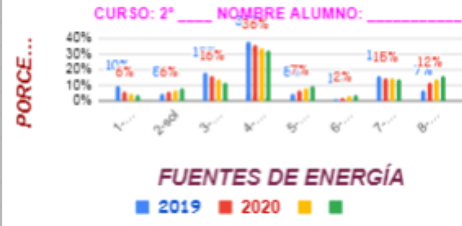


1	biomasa	0	100	150	200	200
2	hidráulica	500	500	500	500	500
3	eólica	100	400	2000	3000	3000
4	termosolar	0	0	50	1000	1000
5	solar	0	0	400	900	1000
	año	2000	2004	2008	2012	2016

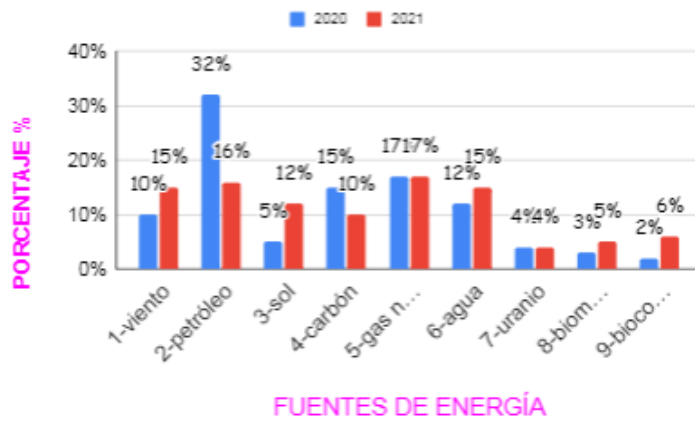
electricidad generada de fuentes renovables (MW)



CONSUMO ENERGÍAS ESPAÑA AÑOS 2019-2020



82			
83			
84			
85	1-viento	10%	15%
86	2-petróleo	32%	16%
87	3-sol	5%	12%
88	4-carbón	15%	10%
89	5-gas natural	17%	17%
90	6-agua	12%	15%
91	7-uranio	4%	4%
92	8-biomasa	3%	5%
93	9-biocombustibles	2%	6%
94		100%	100%
95			
96			
97			
98			
99			
100			



	producción	consumo	
103	1-RENOVABLES	23%	19%
104	2-NUCLEAR	44%	10%
105	3-PETRÓLEO	1%	44%
106	4-CARBÓN	5%	8%
107	5-HIDRAULICA	10%	0%
108	6-BIOMASA	17%	0%
109	7-GAS NATURAL	0%	19%
110		100%	100%
111			
112			
113			
114			
115			
116			
117			
118			
119			
120			

producción y consumo de energía en un año

